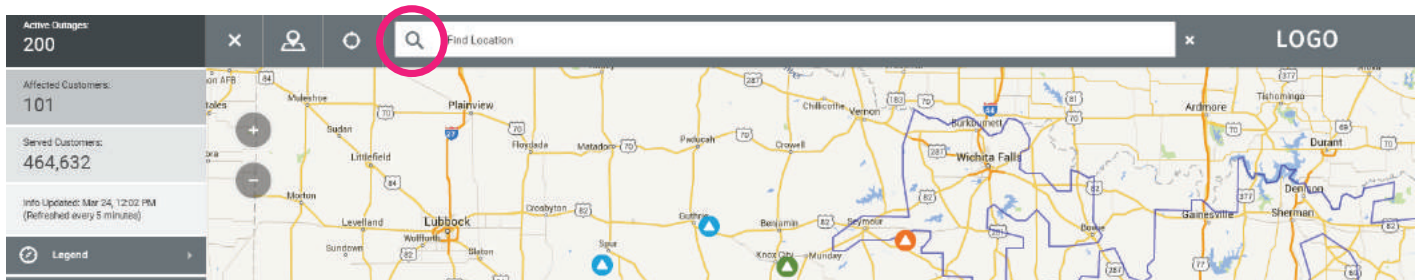


HELP

Note: Colors and/or icons may vary from those shown here.

Search

You can search for an address to show its location on the map. To search, click or tap the search icon (magnifying glass) at the top of the map, type the address into the search bar, and press Enter.



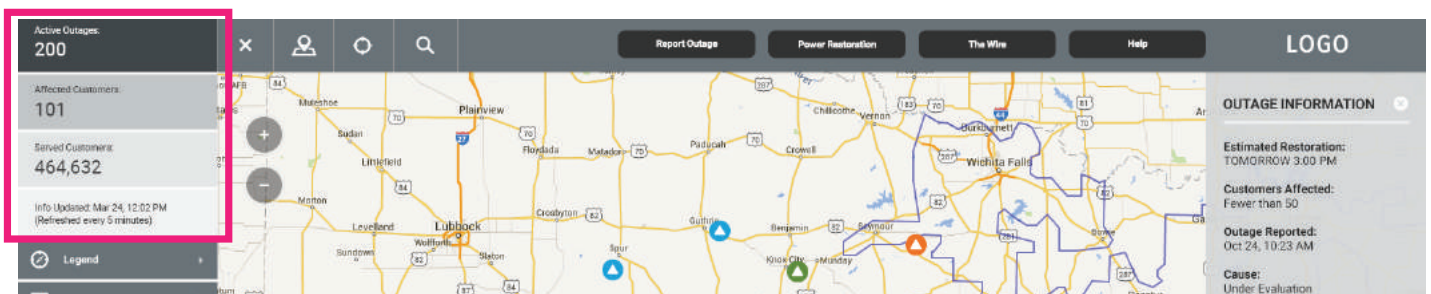
Navigation Panel

To open the navigation panel, click or tap the icon at the upper left corner of the map. The navigation panel contains summary outage information, the map legend, outage summary tables, and a tool for saving map views.



Summary Outage Information

The section at the top of the navigation panel shows information about the total number of outages, the total number of customers affected by outages, the total number of customers served, and the time information on the map was last updated.



Legend - Understanding the Map

You can view outage data by location or by area (county, city, ZIP Code, etc.). To change the map view, click or tap the “Legend” section of the navigation panel, and select the option you want from the dropdown list. View by Location displays icons for individual outage locations or for groups of outage locations. The map groups nearby outages together into “clusters” to reduce cluttering at higher zoom levels. View by Area displays color-coded shading for the number of outages in each area.

This screenshot shows the main interface of the outage map application. At the top left, it displays 'Active Outages: 200', 'Affected Customers: 101', and 'Served Customers: 464,632'. A red banner at the top of the map area reads 'Severe Weather Alert for Dallas'. The map itself shows various cities and service areas with colored icons representing outages. On the left side, a 'Legend' panel is highlighted with a red box. This panel includes a dropdown menu for 'View by Location' and 'View by County/City', and a list of outage categories with corresponding icons: 'More than 2,500 Customers Out' (red triangle), '501-2,500 Customers Out' (orange triangle), '51-500 Customers Out' (green triangle), '1-50 Customers Out' (blue triangle), 'Multiple Outages' (orange circle), 'Crew' (person icon), 'Service Area Boundary' (blue line), and 'Service Area' (green circle). On the right side, an 'OUTAGE INFORMATION' panel is visible, showing details for a selected outage: 'Estimated Restoration: TOMORROW 3:00 PM', 'Customers Affected: Fewer than 50', 'Outage Reported: Oct 24, 10:23 AM', and 'Cause: Under Evaluation'. Below this panel are buttons for 'Magnify / Zoom', 'Report This Outage', and 'More information'.

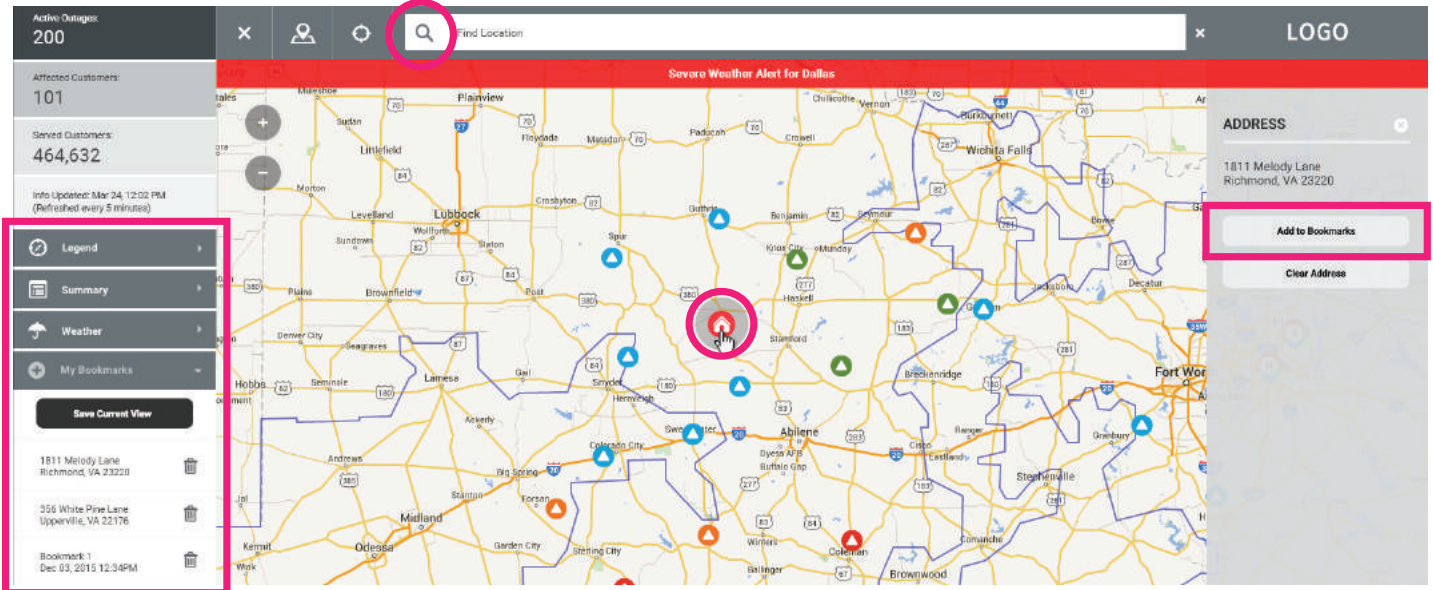
Outage Details - Info Panel

For information about an outage location, click or tap on the individual “outage icon” or “outage cluster” to open the info panel. In View by Area, click or tap an individual area to open the info panel.

This screenshot shows the same interface as the previous one, but with the 'OUTAGE INFORMATION' panel on the right highlighted with a red box. The map shows a red triangle icon (representing 'More than 2,500 Customers Out') selected with a red circle. The 'OUTAGE INFORMATION' panel displays the following details: 'Estimated Restoration: TOMORROW 3:00 PM', 'Customers Affected: Fewer than 50', 'Outage Reported: Oct 24, 10:23 AM', and 'Cause: Under Evaluation'. The buttons 'Magnify / Zoom', 'Report This Outage', and 'More information' are also visible at the bottom of the panel.

Saving Map Views

To save a map view centered on a specific address, click or tap the search icon (magnifying glass) at the top of the map and type in an address, click or tap the house icon on the map, and then click or tap the **Add to Bookmarks** button in the info panel that opens to the right of the map. You can also save the current map view for later reference by clicking or tapping the “Bookmarks” section of the navigation panel and then clicking or tapping the **Save Current View** button. Map view bookmarks are saved using local storage in your web browser.



Panning

To pan on the map, use the arrow keys on your keyboard **OR** click or tap a point on the map and, without releasing, drag the map in any direction.

Zooming

To zoom in or out, click or tap the corresponding button (plus sign or minus sign) in the upper left corner of the map **OR** rotate the wheel on your mouse **OR** pinch in or out.

For additional information, see [Google Maps Help](#)